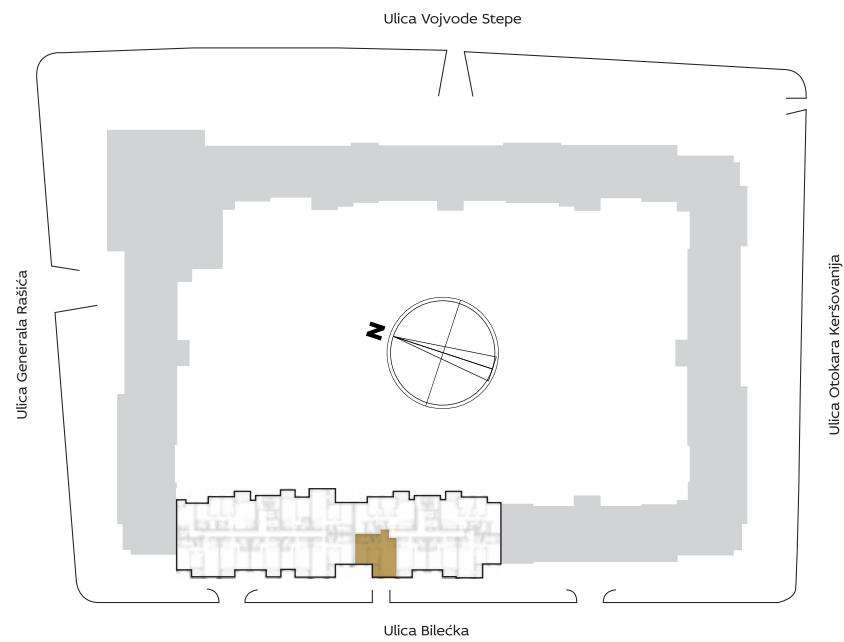


ORIJENTACIJA STANA U KOMPLEKSU



3D PRIKAZ STANA



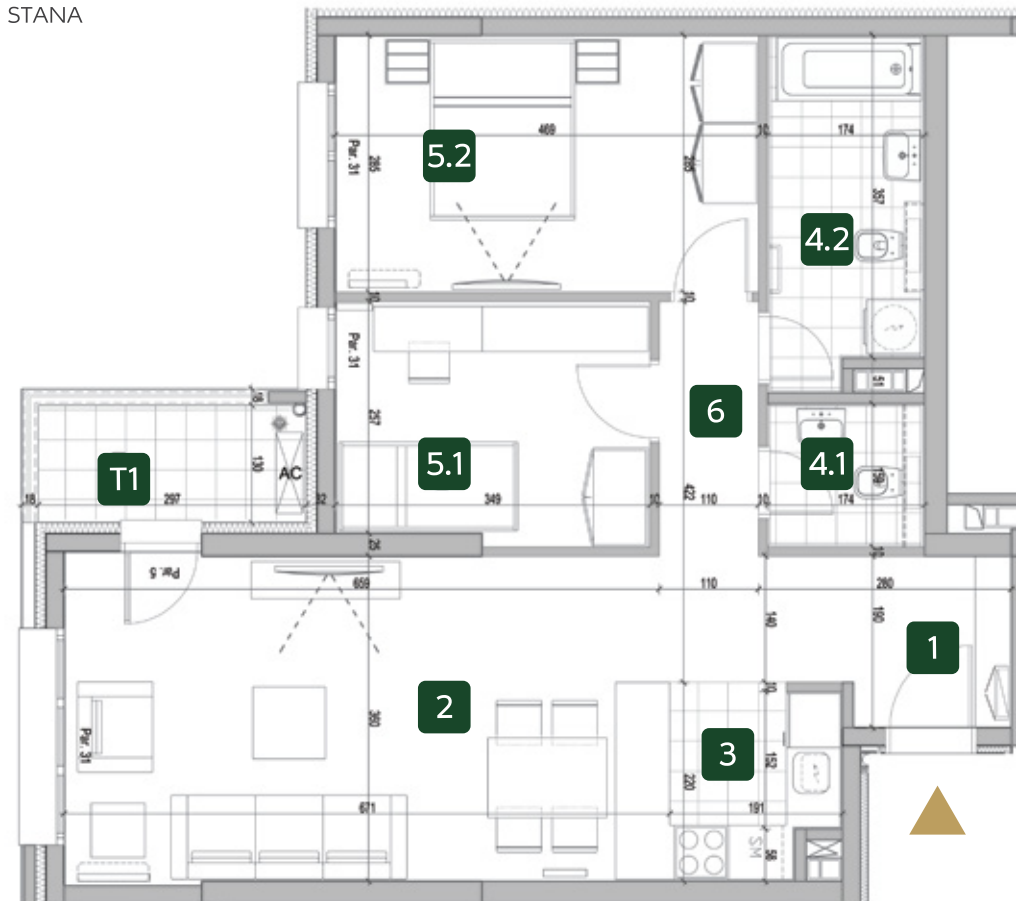
ZGRADA

9

Trosoban stan

PROSTORJE	9.05 / 9.11 9.17 / 9.23	9.29 / 9.35
1 ULAZ	4.36 m ²	4.36 m ²
2 DNEVNA SOBA SA TRPEZARIJOM	24.13 m ²	24.13 m ²
3 KUHINJA	3.84 m ²	3.84 m ²
4.1 TOALET	2.38 m ²	2.37 m ²
4.2 KUPATILO	6.34 m ²	6.37 m ²
5.1 SPAVAĆA SOBA	9.24 m ²	9.24 m ²
5.2 SPAVAĆA SOBA	13.34 m ²	13.34 m ²
6 HODNIK	5.07 m ²	5.07 m ²
NETO STANA BEZ TERASE	68.70 m²	68.72 m²
T1 TERASA	3.86 m ²	3.86 m ²
UKUPNO	72.56 m²	72.58 m²

OSNOVA STANA



I 9.05

II 9.11

III 9.17

IV 9.23

V 9.29

VI 9.35