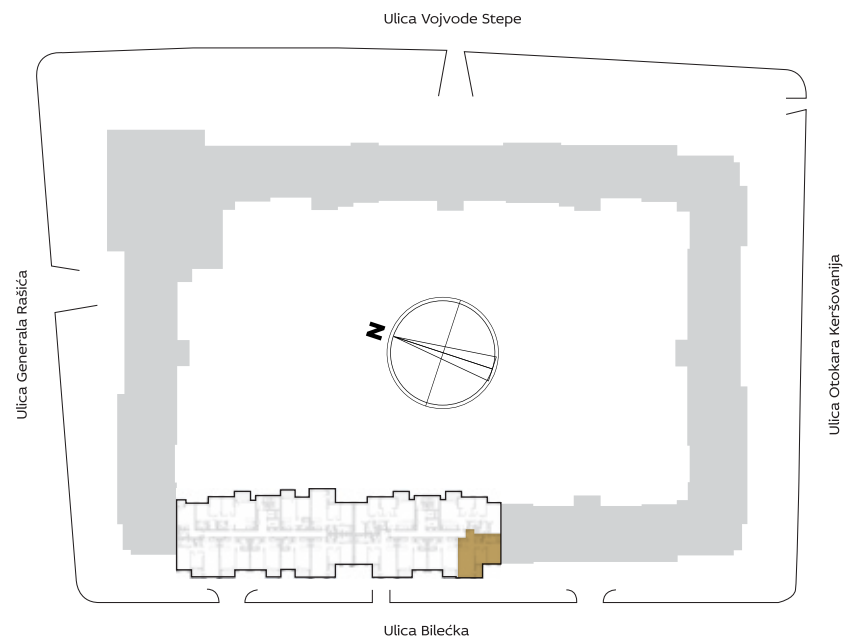


ORIJENTACIJA STANA U KOMPLEKSU



3D PRIKAZ STANA



ZGRADA

9

Trosoban stan

| | |
|-----|------|
| I | 9.02 |
| II | 9.08 |
| III | 9.14 |
| IV | 9.20 |
| V | 9.26 |
| VI | 9.32 |

| PROSTORJE | 9.02 / 9.08 9.14 / 9.20 | 9.26 / 9.32 |
|------------------------------|----------------------------|----------------------------|
| 1 ULAZ | 4.28 m ² | 4.30 m ² |
| 2 DNEVNA SOBA SA TRPEZARIJOM | 23.97 m ² | 23.97 m ² |
| 3 KUHINJA | 3.86 m ² | 3.84 m ² |
| 4.1 TOALET | 2.39 m ² | 2.39 m ² |
| 4.2 KUPATILO | 6.36 m ² | 6.36 m ² |
| 5.1 SPAVAĆA SOBA | 9.33 m ² | 9.33 m ² |
| 5.2 SPAVAĆA SOBA | 13.34 m ² | 13.34 m ² |
| 6 HODNIK | 5.04 m ² | 5.06 m ² |
| NETO STANA BEZ TERASE | 68.57 m² | 68.59 m² |
| T1 TERASA | 3.86 m ² | 3.86 m ² |
| UKUPNO | 72.43 m² | 72.45 m² |

OSNOVA STANA

