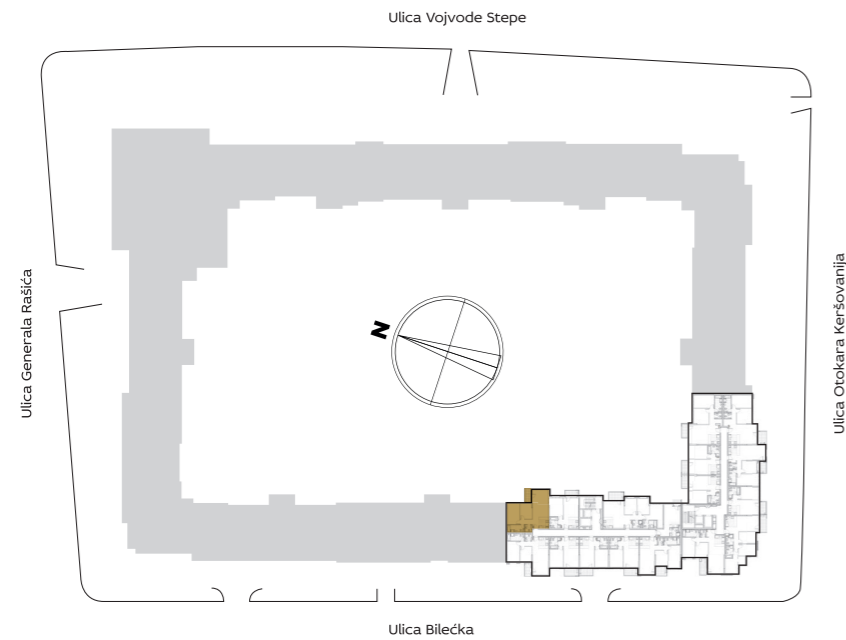


SITUACIONI PLAN



3D IZGLED STANA



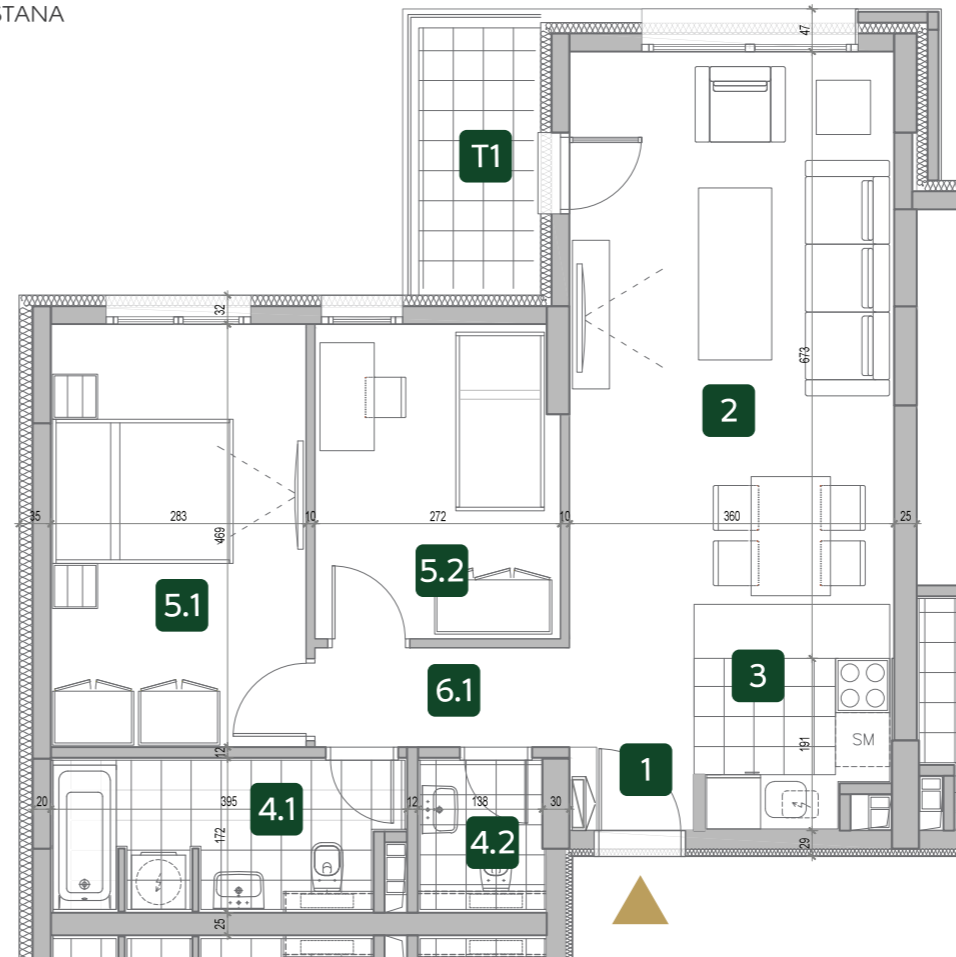
ZGRADA

8

Trosoban stan

PROSTORIJE	8.08 / 8.17	OSTALI STANOVI
1 ULAZ	2.80 m ²	2.80 m ²
2 DNEVNA SOBA SA TRPEZARIJOM	24.06 m ²	24.06 m ²
3 KUHINJA	3.81 m ²	3.85 m ²
4.1 KUPATILO	6.15 m ²	6.15 m ²
4.2 TOALET	2.10 m ²	2.15 m ²
5.1 SPAVAČA SOBA	13.27 m ²	13.27 m ²
5.2 SPAVAČA SOBA	9.35 m ²	9.35 m ²
6.1 HODNIK	3.10 m ²	3.10 m ²
NETO STANA BEZ TERASE	64.63 m²	64.72 m²
T1 TERASA	4.00 m ²	4.00 m ²
UKUPNO	68.63 m²	68.72 m²

OSNOVA STANA



I 8.08

II 8.17

III 8.26

IV 8.35

V 8.44

VI 8.53

VII 8.62