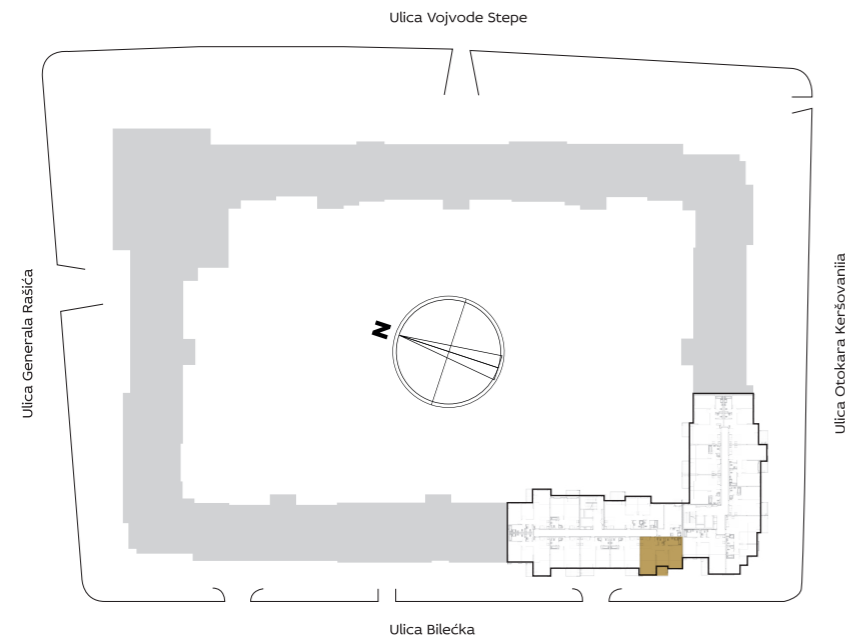


SITUACIONI PLAN



3D IZGLED STANA



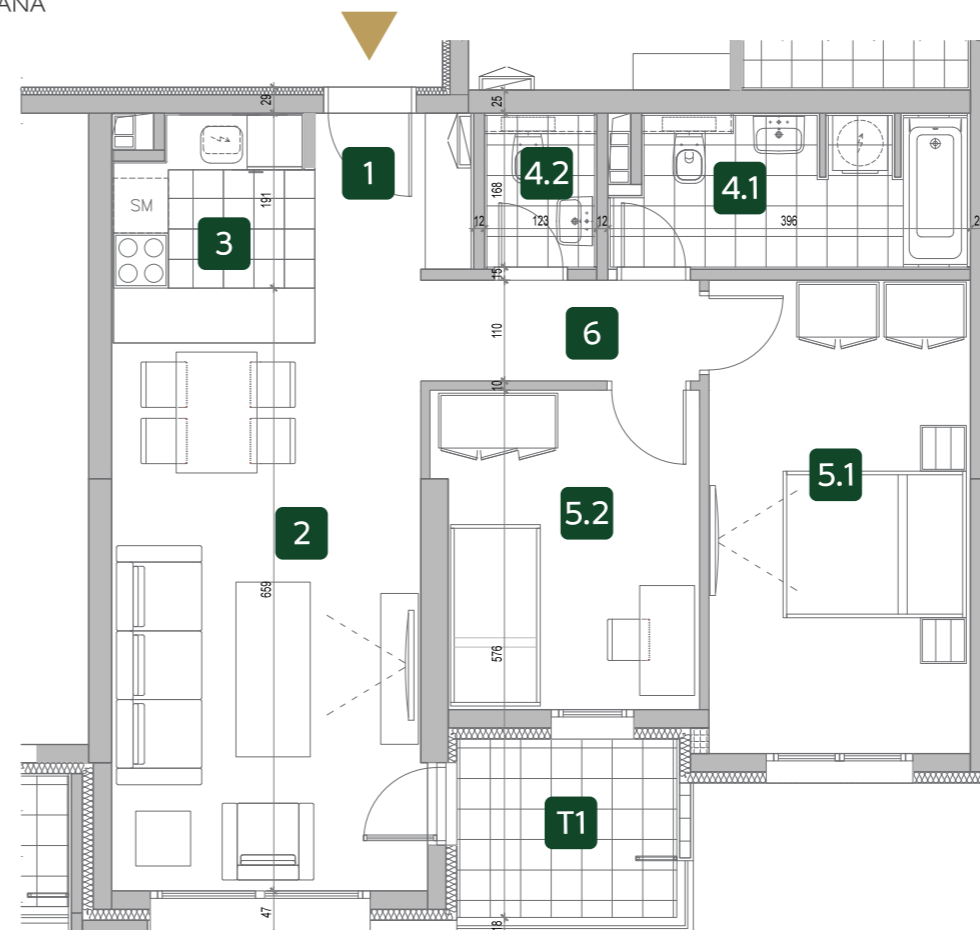
ZGRADA

8

Trosoban stan

PROSTORJE	8.03 / 8.12	OSTALI STANOVI
1 ULAZ	3.09 m <sup>2</sup>	3.09 m <sup>2</sup>
2 DNEVNA SOBA SA TRPEZARIJOM	22.42 m <sup>2</sup>	22.42 m <sup>2</sup>
3 KUHINJA	3.86 m <sup>2</sup>	3.86 m <sup>2</sup>
4.1 KUPATILO	6.12 m <sup>2</sup>	6.12 m <sup>2</sup>
4.2 TOALET	1.86 m <sup>2</sup>	1.86 m <sup>2</sup>
5.1 SPAVAĆA SOBA	14.75 m <sup>2</sup>	14.75 m <sup>2</sup>
5.2 SPAVAĆA SOBA	9.77 m <sup>2</sup>	9.89 m <sup>2</sup>
6 HODNIK	3.35 m <sup>2</sup>	3.35 m <sup>2</sup>
<b>NETO STANA BEZ TERASE</b>	<b>65.23 m<sup>2</sup></b>	<b>65.35 m<sup>2</sup></b>
T1 TERASA	4.68 m <sup>2</sup>	4.68 m <sup>2</sup>
<b>UKUPNO</b>	<b>69.91 m<sup>2</sup></b>	<b>70.03 m<sup>2</sup></b>

OSNOVA STANA



I 8.03

II 8.12

III 8.21

IV 8.30

V 8.39

VI 8.48

VII 8.57