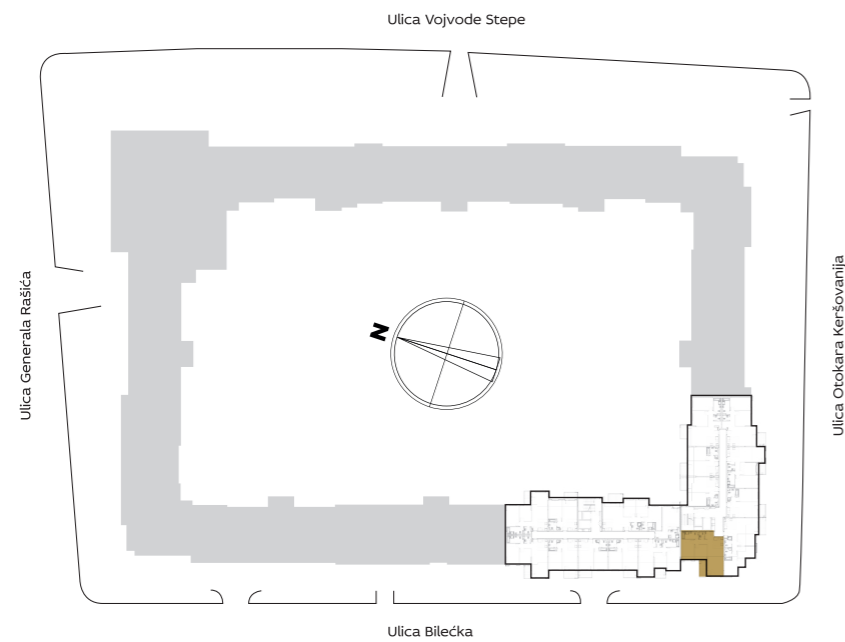


SITUACIONI PLAN



3D IZGLED STANA



ZGRADA

7

Trosoban stan

I 7.08

II 7.16

III 7.24

IV 7.32

V 7.40

VI 7.48

VII 7.56

PROSTORIJE

1	ULAZ	5.15 m <sup>2</sup>
2	DNEVNA SOBA SA TRPEZARIJOM	25.00 m <sup>2</sup>
3	KUHINJA	3.86 m <sup>2</sup>
4.1	TOALET	2.11 m <sup>2</sup>
4.2	KUPATILO	6.16 m <sup>2</sup>
5.1	SPAVAĆA SOBA	9.85 m <sup>2</sup>
5.2	SPAVAĆA SOBA	13.04 m <sup>2</sup>
6	HODNIK	3.29 m <sup>2</sup>
<b>NETO STANA BEZ TERASE</b>		<b>68.46 m<sup>2</sup></b>
T1	TERASA	4.85 m <sup>2</sup>
<b>UKUPNO</b>		<b>73.31 m<sup>2</sup></b>

OSNOVA STANA

