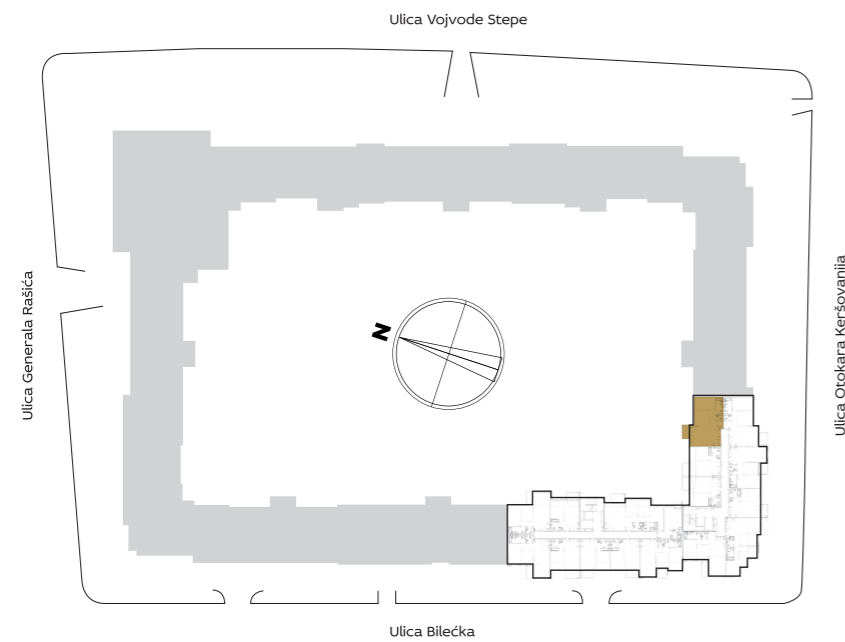


SITUACIONI PLAN



3D IZGLED STANA



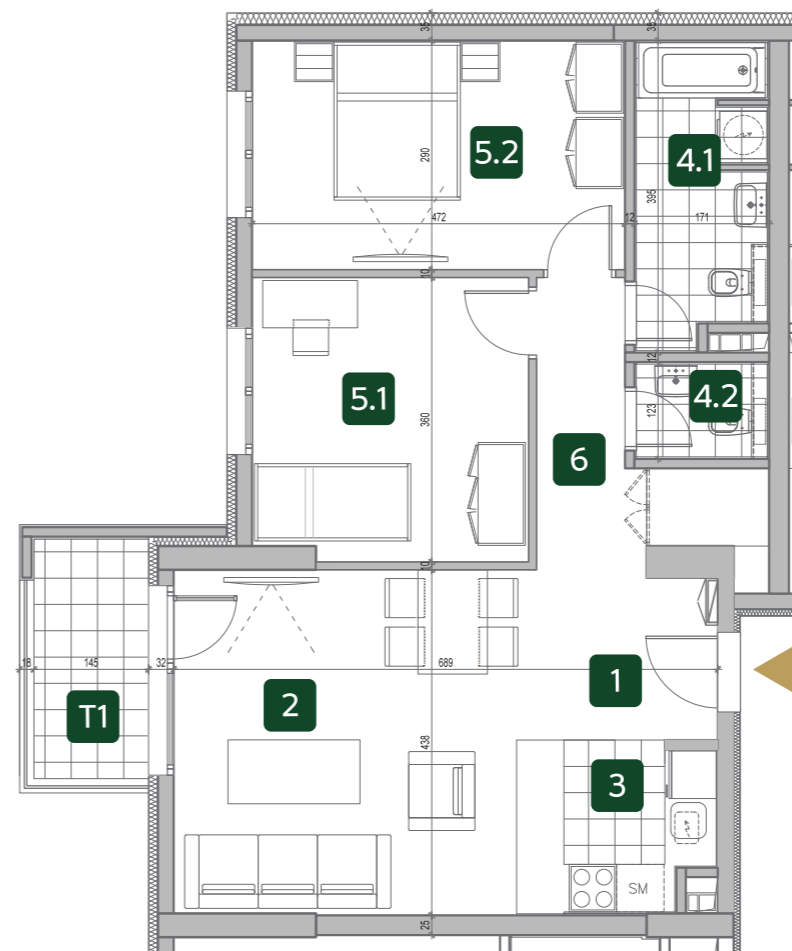
ZGRADA

7

Trosoban stan

PROSTORJE	7.03 / 7.11	7.19 / 7.27	7.35 / 7.43 / 7.51
1 ULAZ	4.11 m ²	4.25 m ²	4.29 m ²
2 DNEVNA SOBA SA TRPEZARIJOM	21.57 m ²	21.86 m ²	21.86 m ²
3 KUHINJA	3.89 m ²	3.93 m ²	3.93 m ²
4.1 KUPATILO	6.12 m ²	6.12 m ²	6.12 m ²
4.2 TOALET	1.84 m ²	1.84 m ²	1.84 m ²
5.1 SPAVAĆA SOBA	12.44 m ²	12.30 m ²	12.30 m ²
5.2 SPAVAĆA SOBA	13.69 m ²	13.69 m ²	13.69 m ²
6 HODNIK	6.02 m ²	5.95 m ²	5.95 m ²
NETO STANA BEZ TERASE	69.67 m²	69.94 m²	69.99 m²
T1 TERASA	4.40 m ²	4.40 m ²	4.40 m ²
UKUPNO	74.07 m²	74.34 m²	74.38 m²

OSNOVA STANA



I 7.03

II 7.11

III 7.19

IV 7.27

V 7.35

VI 7.43

VII 7.51