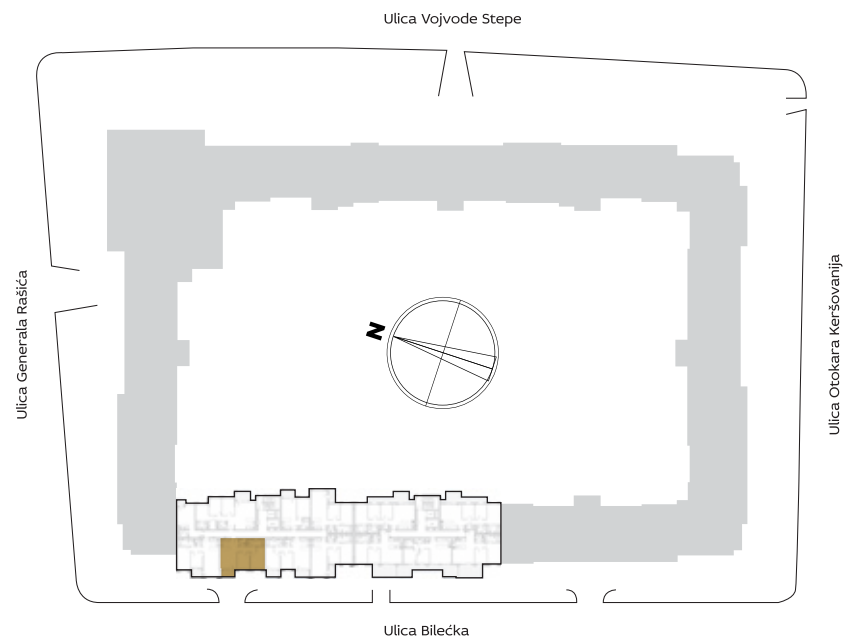


ORIJENTACIJA STANA U KOMPLEKSU



3D PRIKAZ STANA



ZGRADA

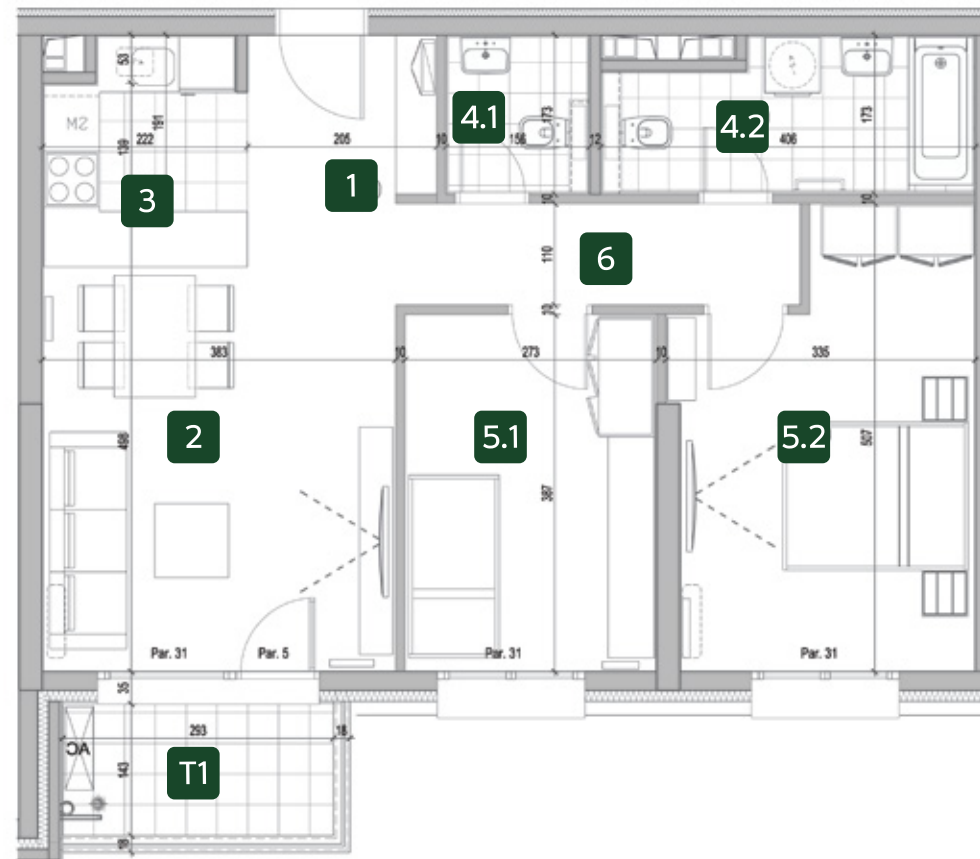
10

Trosoban stan

PROSTORIJE

1	ULAZ	3.70 m ²
2	DNEVNA SOBA SA TRPEZARIJOM	19.19 m ²
3	KUHINJA	3.86 m ²
4.1	TOALET	2.46 m ²
4.2	KUPATILO	6.08 m ²
5.1	SPAVAĆA SOBA	10.54 m ²
5.2	SPAVAĆA SOBA	14.67 m ²
6	HODNIK	4.82 m ²
NETO STANA BEZ TERASE		65.32 m²
T1	TERASA	4.18 m ²
UKUPNO		69.50 m²

OSNOVA STANA



V 10.41

VI 10.49

VII 10.57