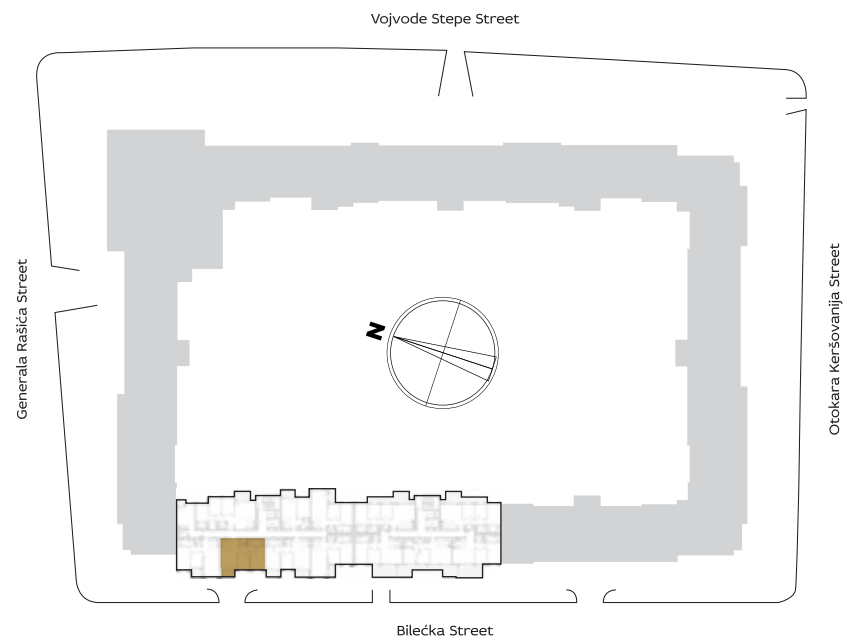


ORIENTATION OF THE APARTMENT WITHIN THE COMPLEX



3D IMAGE VIEW



BUILDING

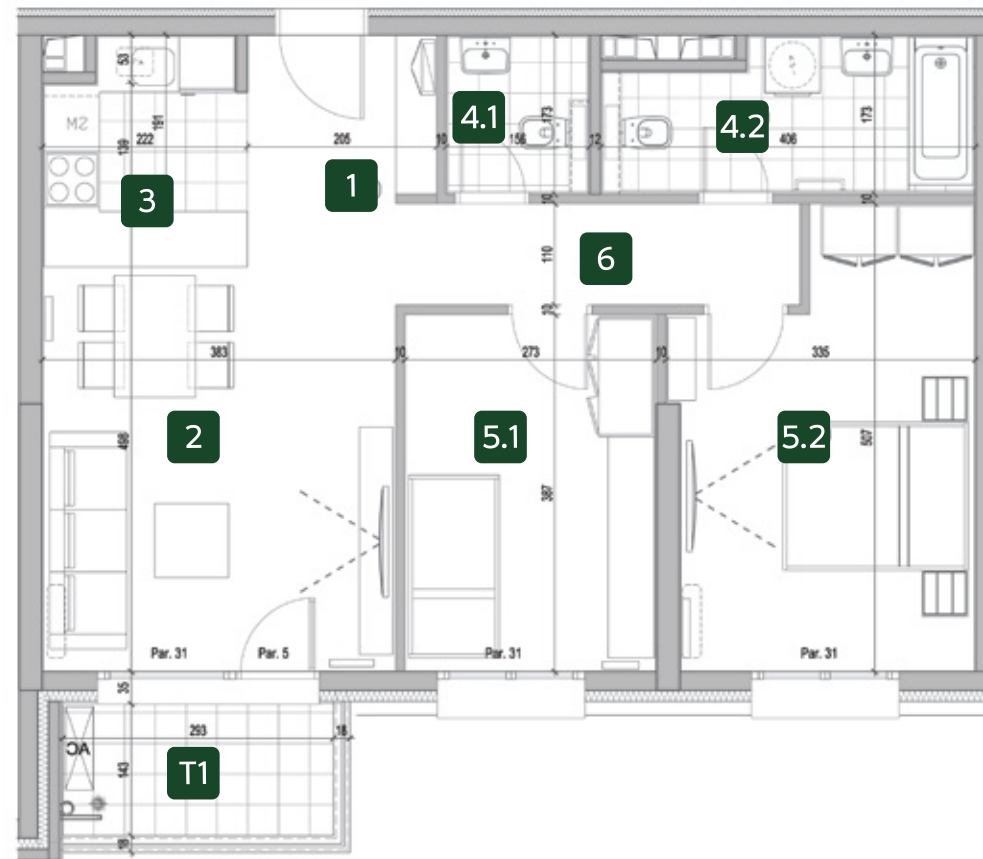
10

Two bedrooms

PREMISES

1	ENTRANCE	3.70 m ²
2	LIVING ROOM WITH DINING AREA	19.19 m ²
3	KITCHEN	3.86 m ²
4.1	TOILET	2.46 m ²
4.2	BATHROOM	6.08 m ²
5.1	BEDROOM	10.54 m ²
5.2	BEDROOM	14.67 m ²
6	HALLWAY	4.82 m ²
NET APARTMENT WITHOUT BALCONY		65.32 m ²
T1	BALCONY	4.18 m ²
TOTAL APARTMENT		69.50 m ²

APARTMENT LAYOUT



V 10.41

VI 10.49

VII 10.57