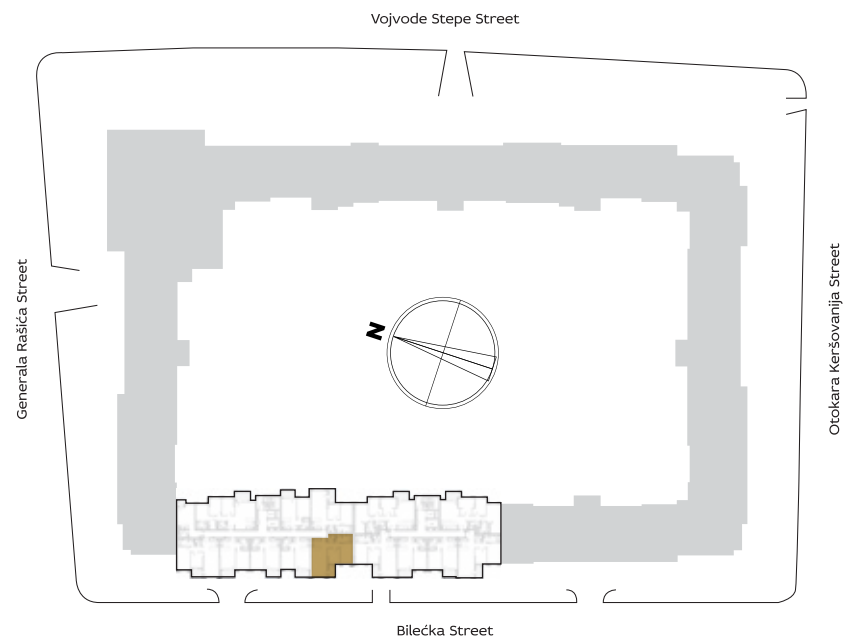


ORIENTATION OF THE APARTMENT WITHIN THE COMPLEX



3D IMAGE VIEW



BUILDING

10

Two bedrooms

I	10.03
II	10.12
III	10.21
IV	10.30
V	10.39
VI	10.47
VII	10.55

PREMISES	10.03 / 10.12 10.21 / 10.30	10.39 10.47 / 10.55
1 ENTRANCE	2.75 m ²	2.75 m ²
2 LIVING ROOM WITH DINING AREA	23.81 m ²	23.89 m ²
3 KITCHEN	3.86 m ²	3.86 m ²
4.1 TOILET	2.32 m ²	2.32 m ²
4.2 BATHROOM	6.32 m ²	6.08 m ²
5.1 BEDROOM	9.50 m ²	9.50 m ²
5.2 BEDROOM	13.09 m ²	13.09 m ²
6 HALLWAY	3.18 m ²	3.18 m ²
NET APARTMENT WITHOUT BALCONY	64.83 m²	64.67 m²
T1 BALCONY	3.94 m ²	3.94 m ²
TOTAL APARTMENT	68.77 m²	68.61 m²

APARTMENT LAYOUT

