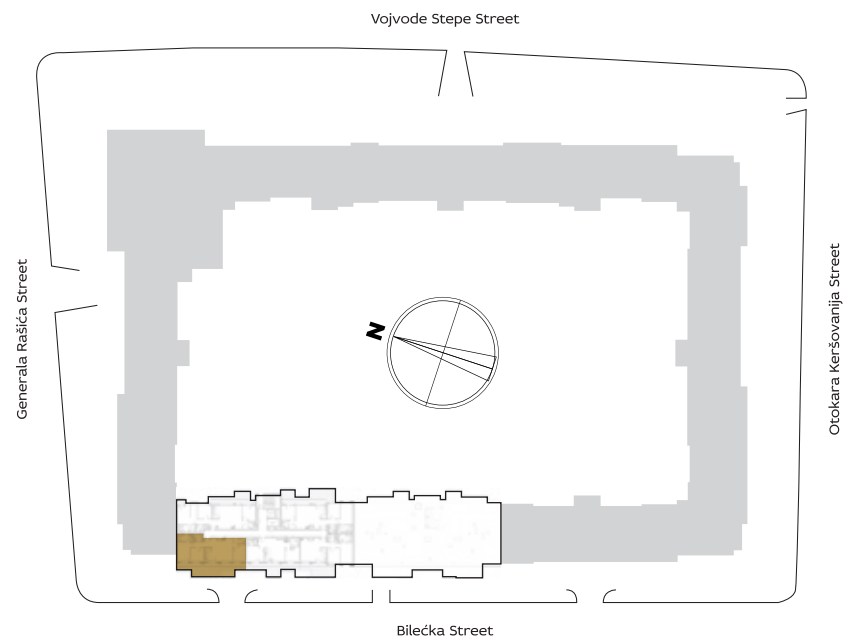


ORIENTATION OF THE APARTMENT WITHIN THE COMPLEX



3D IMAGE VIEW



BUILDING

10

Penthouse
...
Three bedrooms

VIII
FLOOR

10.64



PREMISES

1	ENTRANCE	3.22 m ²
2	LIVING ROOM WITH DINING AREA	23.79 m ²
3	KITCHEN	4.89 m ²
4.1	TOILET	1.91 m ²
4.2	BATHROOM	3.49 m ²
4.3	BATHROOM	5.83 m ²
5.1	BEDROOM	9.83 m ²
5.2	BEDROOM	9.44 m ²
5.3	BEDROOM	12.76 m ²
6.1	HALLWAY	2.15 m ²
6.2	HALLWAY	2.35 m ²
NET APARTMENT WITHOUT BALCONY		79.66 m ²
T1	BALCONY	31.72 m ²
TOTAL APARTMENT		111.38 m ²

APARTMENT LAYOUT

