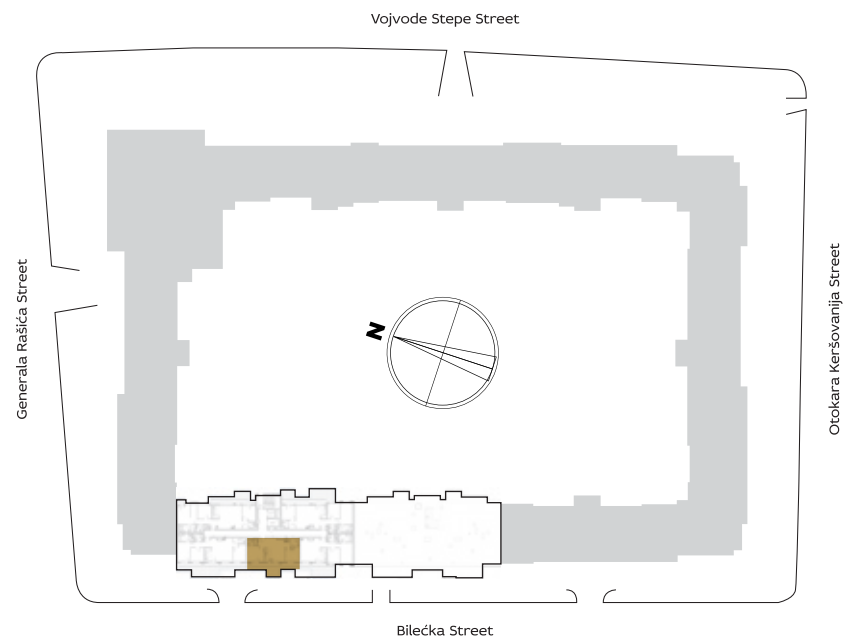


ORIENTATION OF THE APARTMENT WITHIN THE COMPLEX



3D IMAGE VIEW



BUILDING

10

Penthouse
...
Two bedrooms

VIII
FLOOR

10.63



PREMISES

1	ENTRANCE	4.04 m ²
2	LIVING ROOM WITH DINING AREA	18.09 m ²
3	KITCHEN	4.79 m ²
4.1	BATHROOM	4.66 m ²
4.2	BATHROOM	3.03 m ²
5.1	BEDROOM	9.43 m ²
5.2	BEDROOM	10.39 m ²
6	WARDROBE	2.40 m ²
NET APARTMENT WITHOUT BALCONY		56.83 m ²
T1	BALCONY	21.80 m ²
TOTAL APARTMENT		78.63 m ²

APARTMENT LAYOUT

