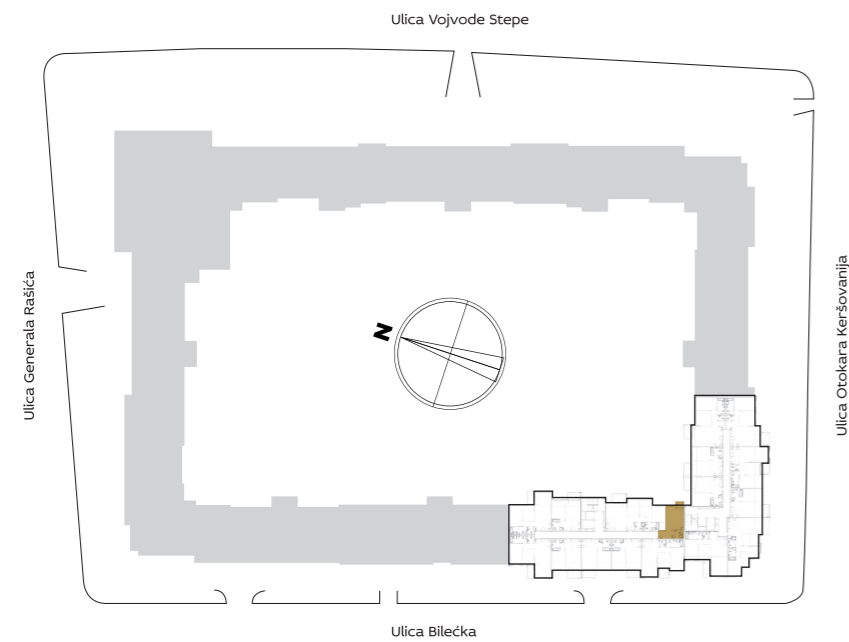


SITUACIONI PLAN



3D IZGLLED STANA



ZGRADA

8

Jednosoban stan

I 8.02

II 8.11

III 8.20

IV 8.29

V 8.38

VI 8.47

VII 8.56

PROSTORIJE

1	ULAZ	5.12 m <sup>2</sup>
2	DNEVNA SOBA SA TRPEZARIJOM	16.41 m <sup>2</sup>
3	KUHINJA	2.90 m <sup>2</sup>
4	KUPATILO	4.07 m <sup>2</sup>
NETO STANA BEZ TERASE		28.51 m <sup>2</sup>
T1	TERASA	1.88 m <sup>2</sup>
UKUPNO		30.39 m <sup>2</sup>

OSNOVA STANA

