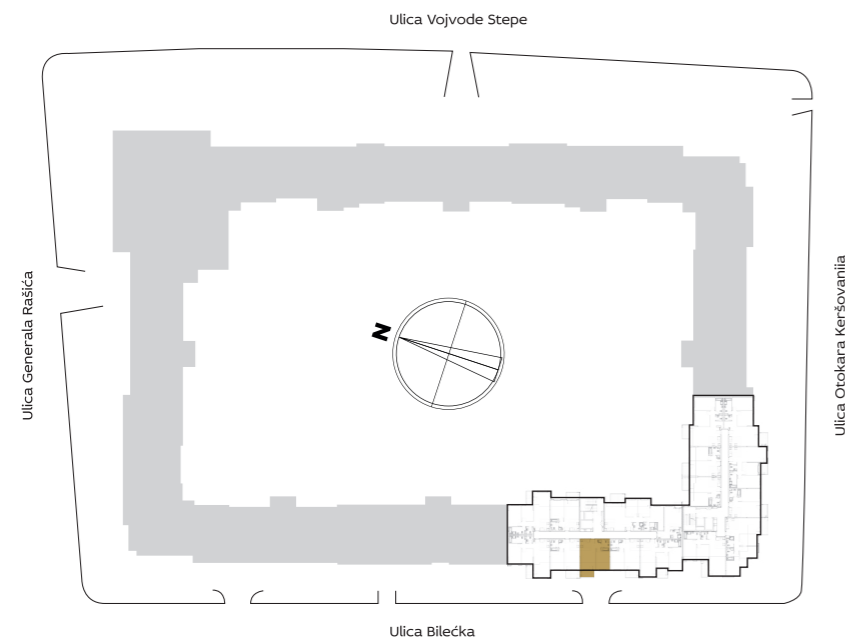


SITUACIONI PLAN



3D IZGLED STANA



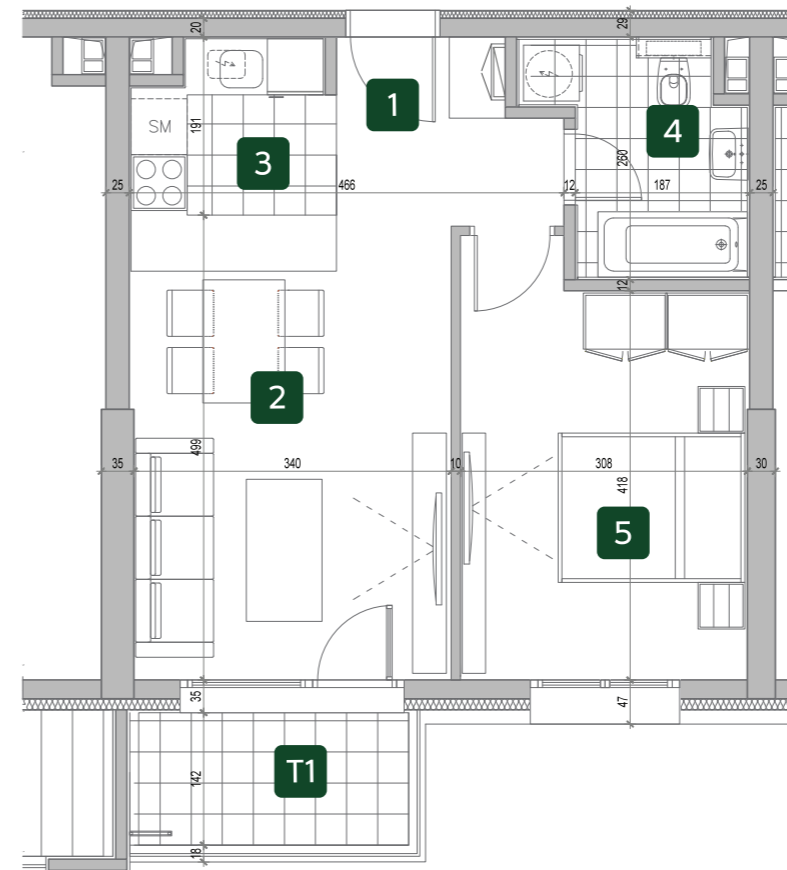
ZGRADA

8

Dvosoban stan

PROSTORIJE	8.05 / 8.14	OSTALI STANOVI
1 ULAZ	4.40 m ²	4.40 m ²
2 DNEVNA SOBA SA TRPEZARIJOM	16.89 m ²	17.04 m ²
3 KUHINJA	3.86 m ²	3.86 m ²
4 KUPATILO	4.89 m ²	4.89 m ²
5 SPAVAĆA SOBA	13.51 m ²	13.58 m ²
NETO STANA BEZ TERASE	43.56 m²	43.77 m²
T1 TERASA	4.34 m ²	4.34 m ²
UKUPNO	47.90 m²	48.11 m²

OSNOVA STANA



I 8.05

II 8.14

III 8.23

IV 8.32

V 8.41

VI 8.50

VII 8.59