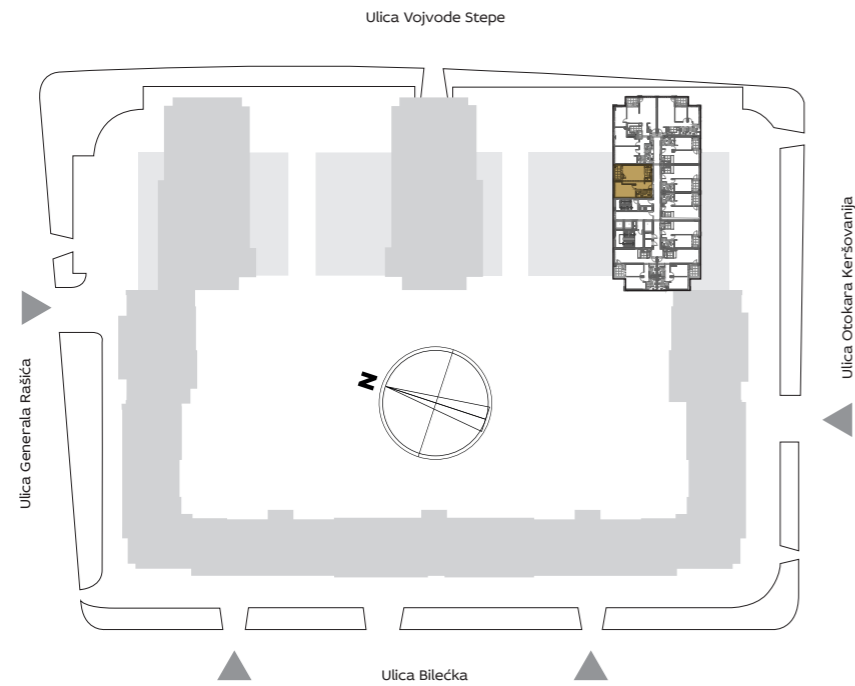


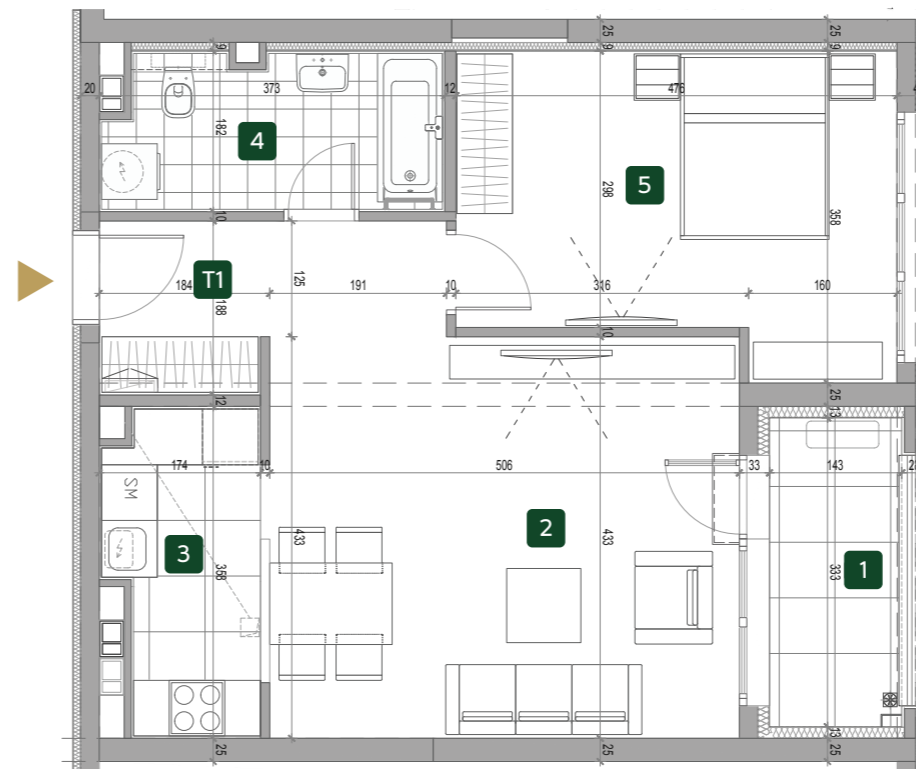
ORIJENTACIJA STANA U KOMPLEKSU



3D PRIKAZ STANA



OSNOVA STANA



ZGRADA

5

Dvosoban stan

VI 5.56

VII 5.65

VIII 5.74

IX 5.83

X 5.92

XI 5.101

XII 5.110

PROSTORIJE

1	ULAZ	5.77 m <sup>2</sup>
2	DNEVNA SOBA SA TRPEZARIJOM	21.99 m <sup>2</sup>
3	KUHINJA	5.48 m <sup>2</sup>
4	KUPATILO	5.90 m <sup>2</sup>
5	SPAVAĆA SOBA	15.13 m <sup>2</sup>
NETO STANA BEZ TERASE		54.27 m <sup>2</sup>
T1	TERASA	4.74 m <sup>2</sup>
UKUPNO		59.01 m <sup>2</sup>