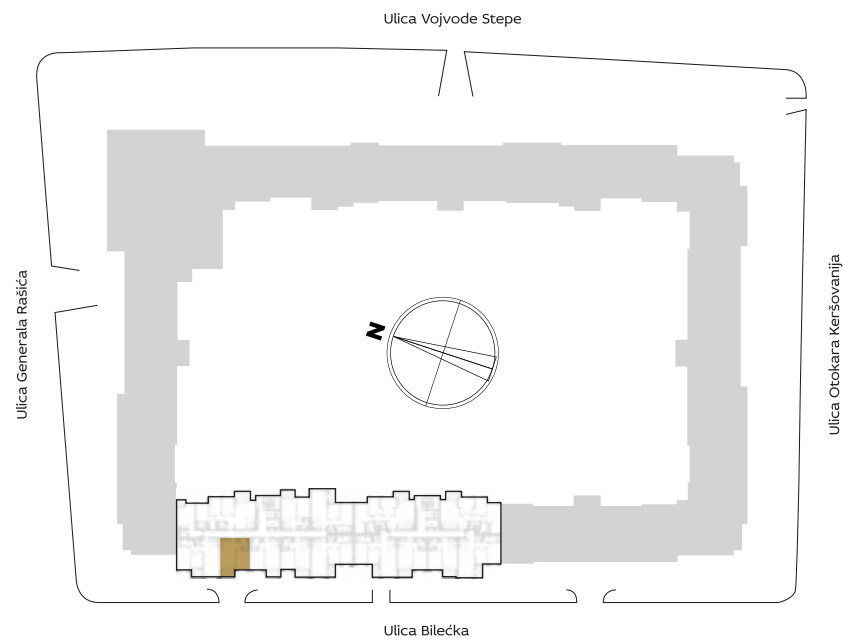


ORIJENTACIJA STANA U KOMPLEKSU



3D PRIKAZ STANA



ZGRADA

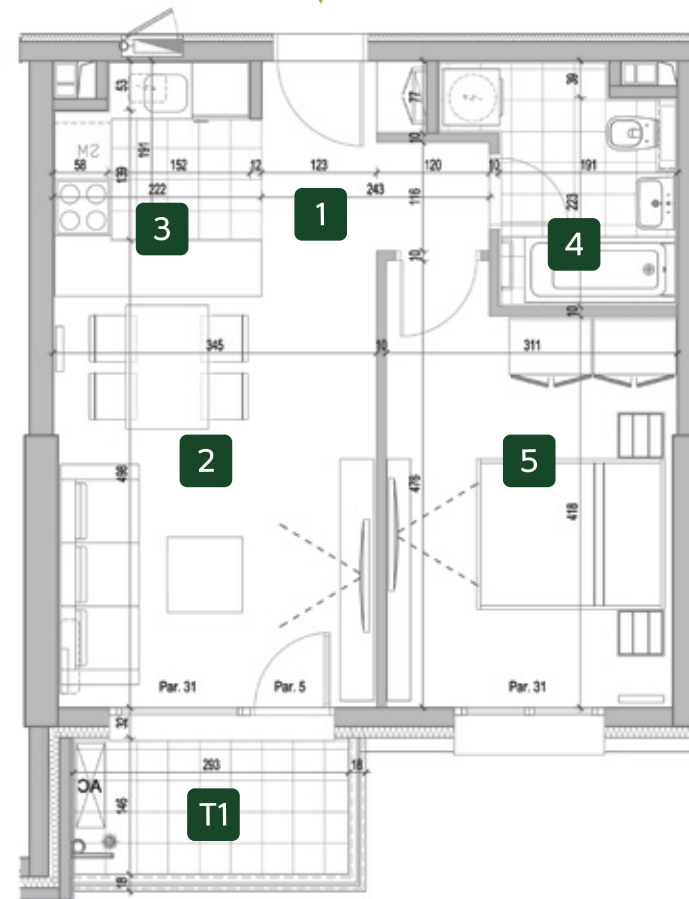
10

Dvosoban stan

PROSTORIJE

1	ULAZ	4.28 m <sup>2</sup>
2	DNEVNA SOBA SA TRPEZARIJOM	16.89 m <sup>2</sup>
3	KUHINJA	3.86 m <sup>2</sup>
4	KUPATILO	5.05 m <sup>2</sup>
5	SPAVAĆA SOBA	13.46 m <sup>2</sup>
<b>NETO STANA BEZ TERASE</b>		<b>43.54 m<sup>2</sup></b>
T1	TERASA	4.17 m <sup>2</sup>
<b>UKUPNO</b>		<b>47.71 m<sup>2</sup></b>

OSNOVA STANA



I 10.06

II 10.15

III 10.24

IV 10.33