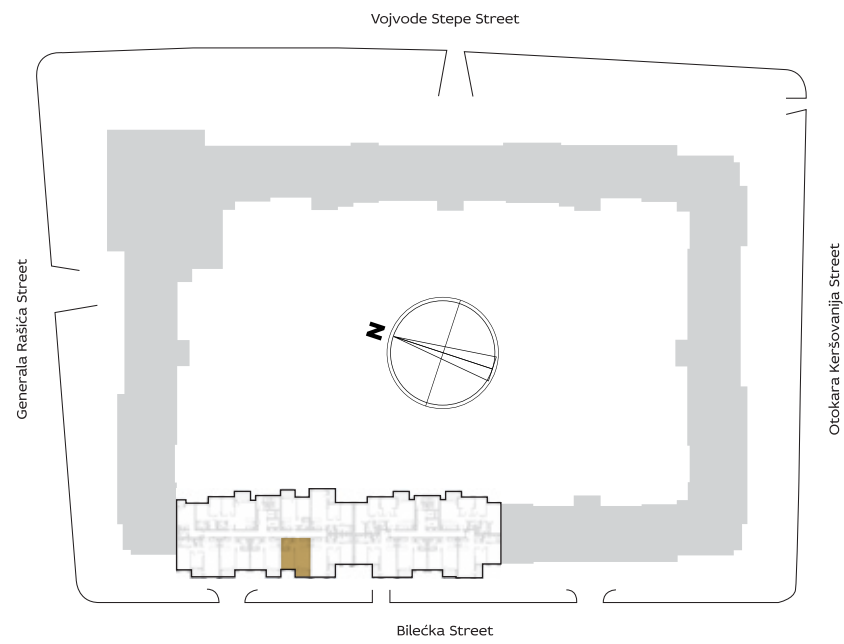


ORIENTATION OF THE APARTMENT WITHIN THE COMPLEX



3D IMAGE VIEW



BUILDING

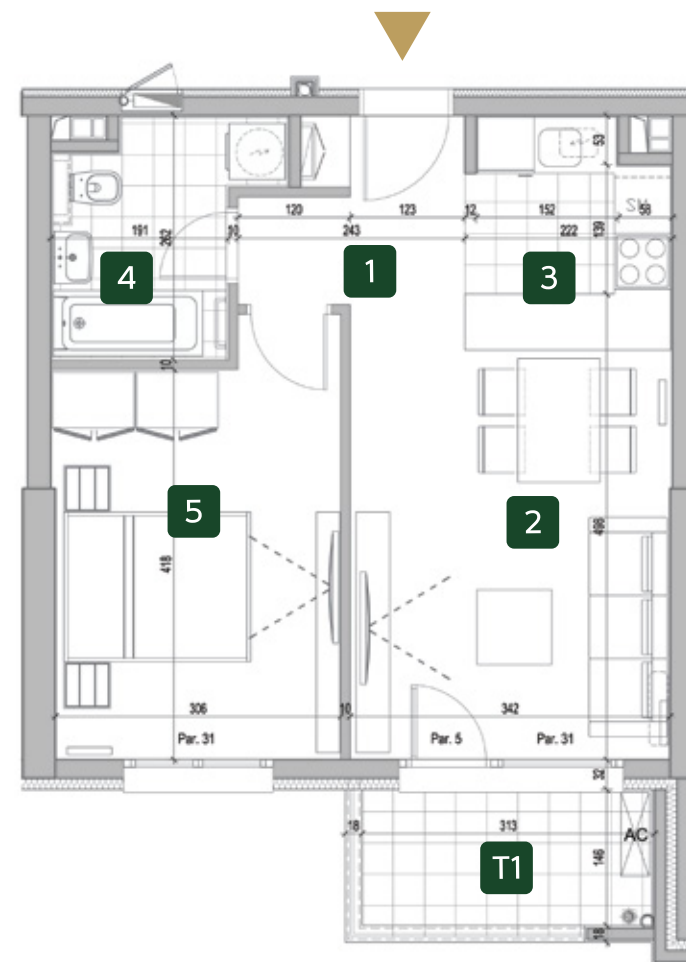
10

One bedroom

PREMISES

1	ENTRANCE	4.23 m <sup>2</sup>
2	LIVING ROOM WITH DINING AREA	16.96 m <sup>2</sup>
3	KITCHEN	3.86 m <sup>2</sup>
4	BATHROOM	5.05 m <sup>2</sup>
5	BEDROOM	13.46 m <sup>2</sup>
NET APARTMENT WITHOUT BALCONY		43.61 m <sup>2</sup>
T1	BALCONY	4.51 m <sup>2</sup>
TOTAL APARTMENT		48.12 m <sup>2</sup>

APARTMENT LAYOUT



I 10.04

II 10.13

III 10.22

IV 10.31