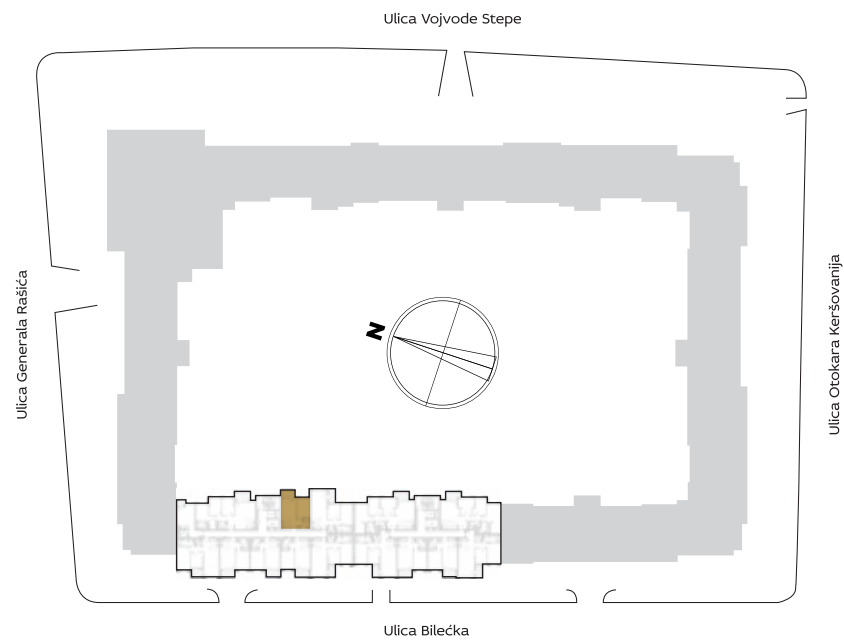


ORIJENTACIJA STANA U KOMPLEKSU



3D PRIKAZ STANA



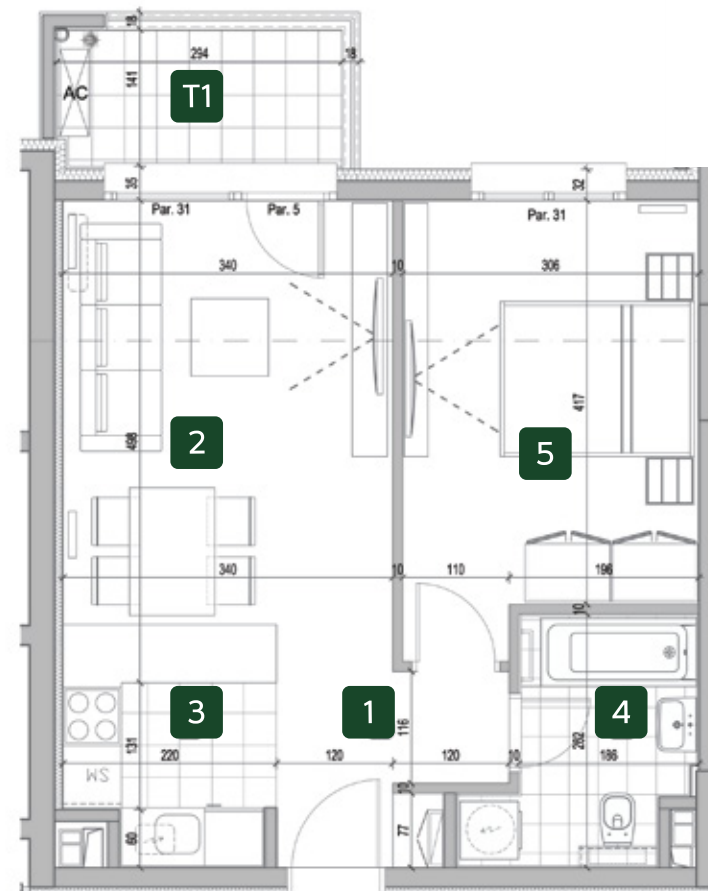
ZGRADA

10

Dvosoban stan

PROSTORJE	10.01 / 10.10 10.19 / 10.28	10.37 10.45 / 10.53
1 ULAZ	4.23 m <sup>2</sup>	4.23 m <sup>2</sup>
2 DNEVNA SOBA SA TRPEZARIJOM	16.79 m <sup>2</sup>	16.79 m <sup>2</sup>
3 KUHINJA	3.78 m <sup>2</sup>	3.78 m <sup>2</sup>
4 KUPATILO	4.85 m <sup>2</sup>	4.86 m <sup>2</sup>
5 SPAVAĆA SOBA	13.40 m <sup>2</sup>	13.40 m <sup>2</sup>
<b>NETO STANA BEZ TERASE</b>	<b>43.05 m<sup>2</sup></b>	<b>43.06 m<sup>2</sup></b>
T1 TERASA	4.11 m <sup>2</sup>	4.11 m <sup>2</sup>
<b>UKUPNO</b>	<b>47.16 m<sup>2</sup></b>	<b>47.17 m<sup>2</sup></b>

OSNOVA STANA



I 10.01

II 10.10

III 10.19

IV 10.28

V 10.37

VI 10.45

VII 10.53