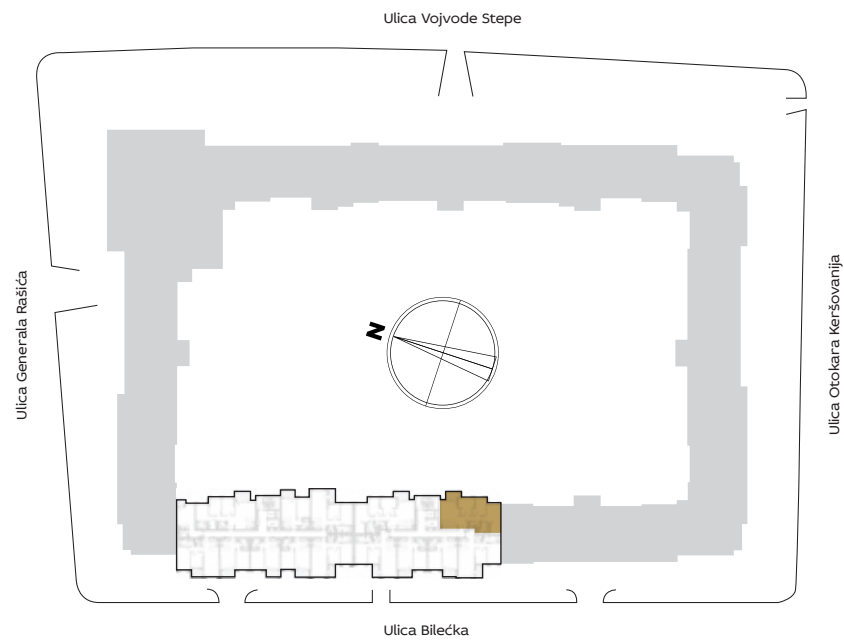


SITUACIONI PLAN



3D IZGLLED STANA



ZGRADA

9

Četvorosoban stan

I 9.01

II 9.07

III 9.13

IV 9.19

V 9.25

VI 9.31

PROSTORJE	9.01 / 9.07 9.13 / 9.19	9.25 / 9.31
1 ULAZ	4.17 m ²	4.17 m ²
2 DNEVNA SOBA SA TRPEZARIJOM	18.07 m ²	18.07 m ²
3 KUHINJA	6.79 m ²	6.83 m ²
4.1 KUPATILO	3.96 m ²	4.01 m ²
4.2 KUPATILO	5.74 m ²	5.79 m ²
5.1 SPAVAĆA SOBA	12.03 m ²	12.03 m ²
5.2 SPAVAĆA SOBA	10.38 m ²	10.44 m ²
5.3 SPAVAĆA SOBA	13.06 m ²	13.06 m ²
6.1 HODNIK	5.71 m ²	5.71 m ²
6.2 GARDEROBER	5.92 m ²	5.92 m ²
NETO STANA BEZ TERASE	85.83 m²	86.03 m²
T1 TERASA	4.87 m ²	4.87 m ²
UKUPNO	90.70 m²	90.90 m²

OSNOVA STANA

