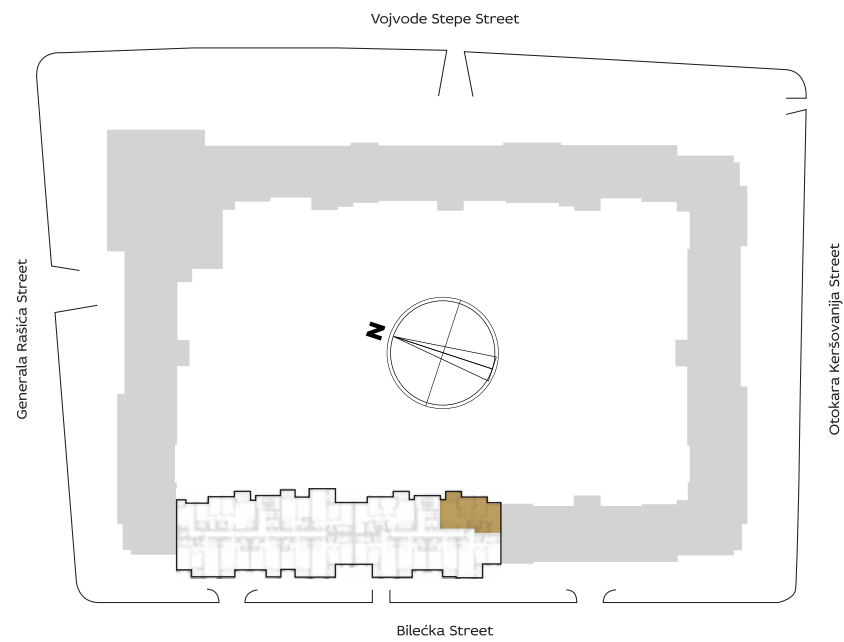


ORIENTATION OF THE APARTMENT WITHIN THE COMPLEX



3D IMAGE VIEW



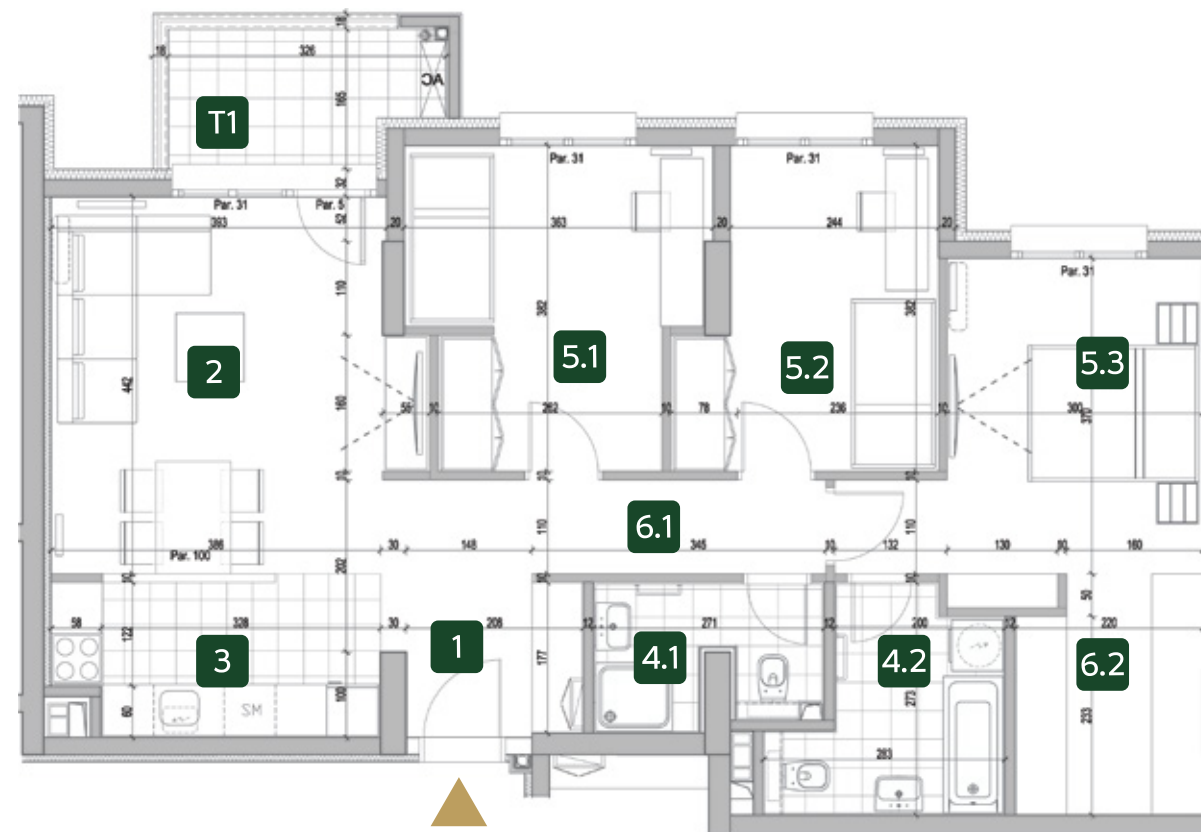
BUILDING

9

Three bedrooms

PREMISES	9.01 / 9.07 9.13 / 9.19	9.25 / 9.31
1 ENTRANCE	4.17 m ²	4.17 m ²
2 LIVING ROOM WITH DINING AREA	18.07 m ²	18.07 m ²
3 KITCHEN	6.79 m ²	6.83 m ²
4.1 BATHROOM	3.96 m ²	4.01 m ²
4.2 BATHROOM	5.74 m ²	5.79 m ²
5.1 BEDROOM	12.03 m ²	12.03 m ²
5.2 BEDROOM	10.38 m ²	10.44 m ²
5.3 BEDROOM	13.06 m ²	13.06 m ²
6.1 HALLWAY	5.71 m ²	5.71 m ²
6.2 WARDROBE	5.92 m ²	5.92 m ²
NET APARTMENT WITHOUT BALCONY	85.83 m²	86.03 m²
T1 BALCONY	4.87 m ²	4.87 m ²
TOTAL APARTMENT	90.70 m²	90.90 m²

APARTMENT LAYOUT



I	9.01
II	9.07
III	9.13
IV	9.19
V	9.25
VI	9.31