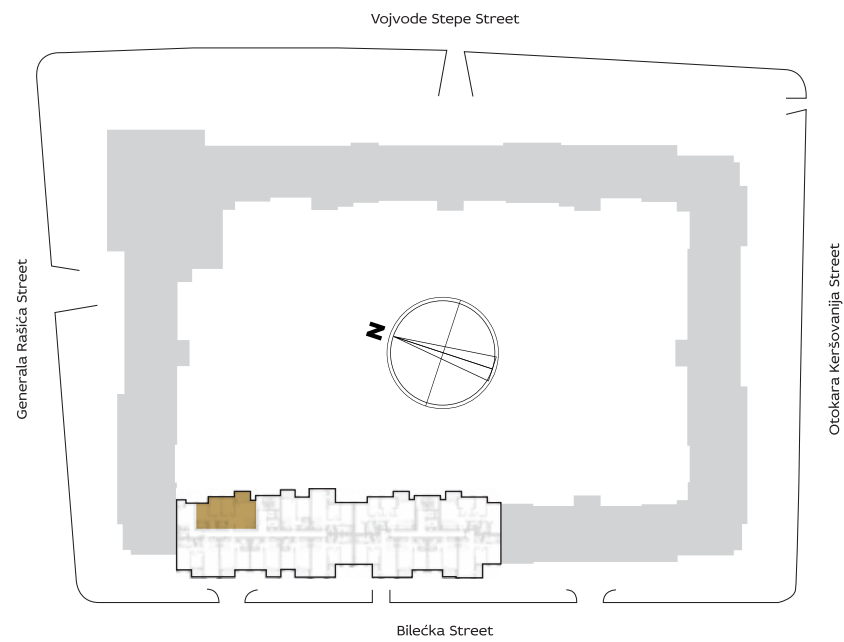


ORIENTATION OF THE APARTMENT WITHIN THE COMPLEX



3D IMAGE VIEW



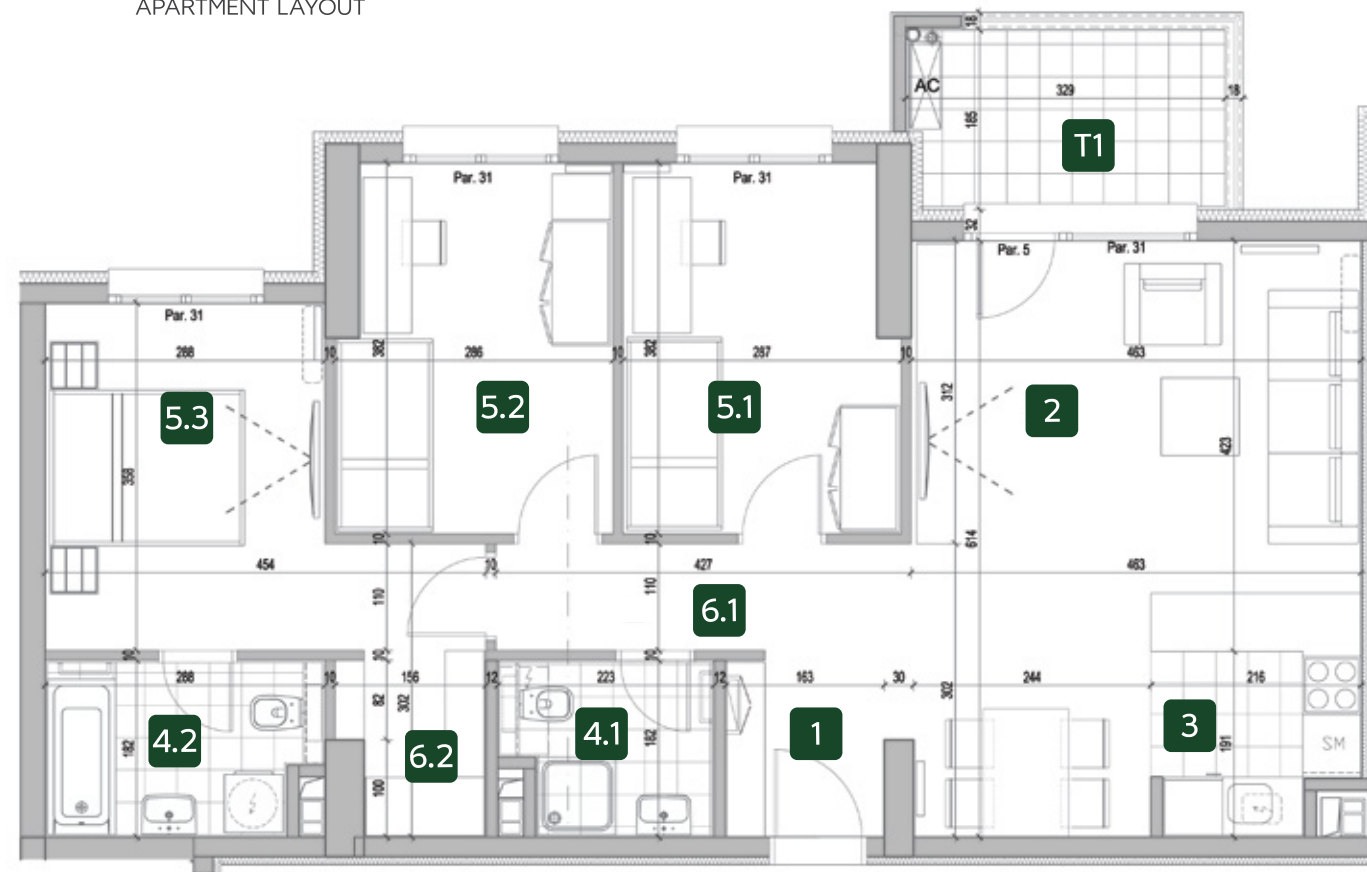
BUILDING

10

Three bedrooms

PREMISES	10.09 / 10.18 10.27 / 10.36	10.44 10.52 / 10.60
1 ENTRANCE	5.00 m ²	5.02 m ²
2 LIVING ROOM WITH DINING AREA	24.25 m ²	24.27 m ²
3 KITCHEN	3.70 m ²	3.70 m ²
4.1 BATHROOM	3.50 m ²	3.50 m ²
4.2 BATHROOM	4.71 m ²	4.71 m ²
5.1 BEDROOM	10.49 m ²	10.67 m ²
5.2 BEDROOM	10.47 m ²	10.65 m ²
5.3 BEDROOM	12.12 m ²	12.12 m ²
6.1 HALLWAY	3.04 m ²	3.04 m ²
6.2 WARDROBE	2.66 m ²	2.78 m ²
NET APARTMENT WITHOUT BALCONY	79.94 m²	80.46 m²
T1 BALCONY	5.88 m ²	5.88 m ²
TOTAL APARTMENT	85.82 m²	86.34 m²

APARTMENT LAYOUT



I	10.09
II	10.18
III	10.27
IV	10.36
V	10.44
VI	10.52
VII	10.60